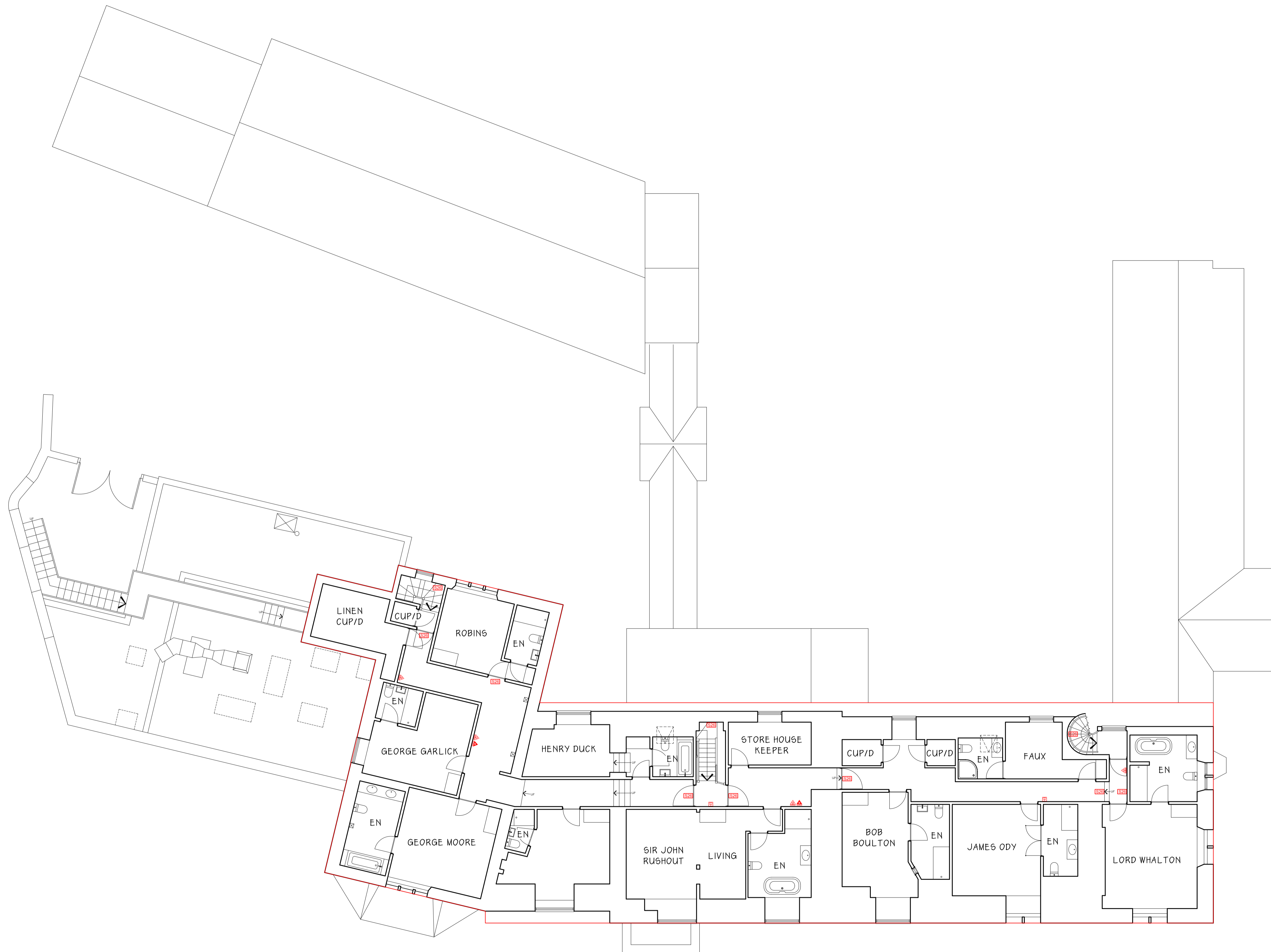
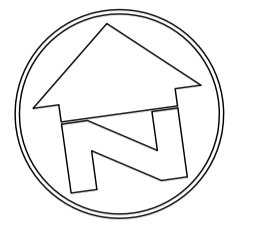


# THE OLD BELL HOTEL, ABBEY ROW, MALMESBURY, SN16 0BW


This drawing is copyright of CLARK & MASLIN Ltd and may not be copied or reproduced without permission.  
 Figured dimensions are to be taken in preference to scaled dimensions.  
 Large scale drawings to have preference to small scale drawings.  
 Dimensions for fixed-in items are to be checked on site prior to manufacture.

REV	DETAIL OF REVISION	BY	DATE
A	RED LINE INDICATING OUTER BOUNDARY ADDED	HH	23/07/21



## SECOND FLOOR PLAN

- KEY:
- FIRE EXTINGUISHER WATER WALL MOUNTED
  - FIRE EXTINGUISHER FOAM WALL MOUNTED
  - FIRE ALARM DEVICE WALL MOUNTED
  - FIRE EXTINGUISHER CARBON DIOXIDE GAS WALL MOUNTED
  - FIRE EXTINGUISHER WET CHEMICAL WALL MOUNTED
  - FIRE ALARM CALL POINT MANUAL
  - FIRE EXTINGUISHER DRY POWDER WALL MOUNTED
  - FIRE EXTINGUISHER FIRE BLANKET WALL MOUNTED
  - S26 FIRE SAFETY SIGN FIRE EXIT - DIRECTIONAL
  - S22 FIRE SAFETY SIGN FIRE EXIT



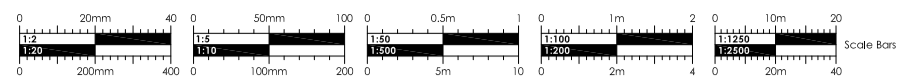
**CLARK & MASLIN**  
 Unit 5, Charlton Business Park  
 Crudwell Road, Malmesbury  
 Wiltshire, SN16 9RU  
 Telephone: 01666 822911  
 www.clarkandmaslin.co.uk  
 Planning Architecture Conservation

Client  
**WHIT HANKS**

Project  
**PROPOSED PREMISES LICENCE  
 THE OLD BELL HOTEL, ABBEY ROW,  
 MALMESBURY, SN16 0BW**

Description  
**EXISTING SECOND FLOOR PLAN**

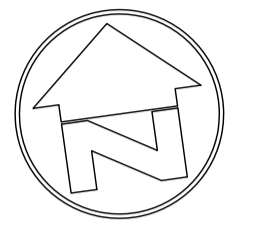
Scale 1:100	PG Size A1	Drawn HH	Date JUL '21
Drawing No <b>5111/62</b>	Revision <b>A</b>		



# THE OLD BELL HOTEL, ABBEY ROW, MALMESBURY, SN16 0BW

This drawing is copyright of CLARK & MASLIN Ltd and may not be copied or reproduced without permission.  
 Figured dimensions are to be taken in preference to scaled dimensions.  
 Large scale drawings to have preference to small scale drawings.  
 Dimensions for fixed-in items are to be checked on site prior to manufacture.

REV	DETAIL OF REVISION	BY	DATE
A	RED LINE INDICATING OUTER BOUNDARY ADDED	HH	23/07/21

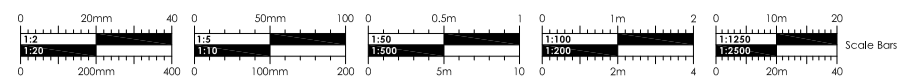


- FIRST FLOOR PLAN**
- KEY:**
- FIRE EXTINGUISHER WATER WALL MOUNTED
  - FIRE EXTINGUISHER FOAM WALL MOUNTED
  - FIRE ALARM DEVICE FIRE ALARM CALL POINT MANUAL
  - FIRE EXTINGUISHER CARBON DIOXIDE GAS WALL MOUNTED
  - FIRE EXTINGUISHER WET CHEMICAL WALL MOUNTED
  - FIRE EXTINGUISHER DRY POWDER WALL MOUNTED
  - FIRE EXTINGUISHER FIRE BLANKET WALL MOUNTED
  - FIRE SAFETY SIGN FIRE EXIT - DIRECTIONAL
  - FIRE SAFETY SIGN FIRE EXIT

**CLARK & MASLIN**  
 Unit 5, Charlton Business Park  
 Crudwell Road, Malmesbury  
 Wiltshire, SN16 9RU  
 Telephone: 01666 822911  
 www.clarkandmaslin.co.uk  
 Planning Architecture Conservation

Client <b>WHIT HANKS</b>			
Project <b>PROPOSED PREMISES LICENCE THE OLD BELL HOTEL, ABBEY ROW, MALMESBURY, SN16 0BW</b>			
Description <b>EXISTING FIRST FLOOR PLAN</b>			
Scale 1:100	PG Size A1	Drawn HH	Date JUL '21
Drawing No <b>5111/61</b>	Revision <b>A</b>		

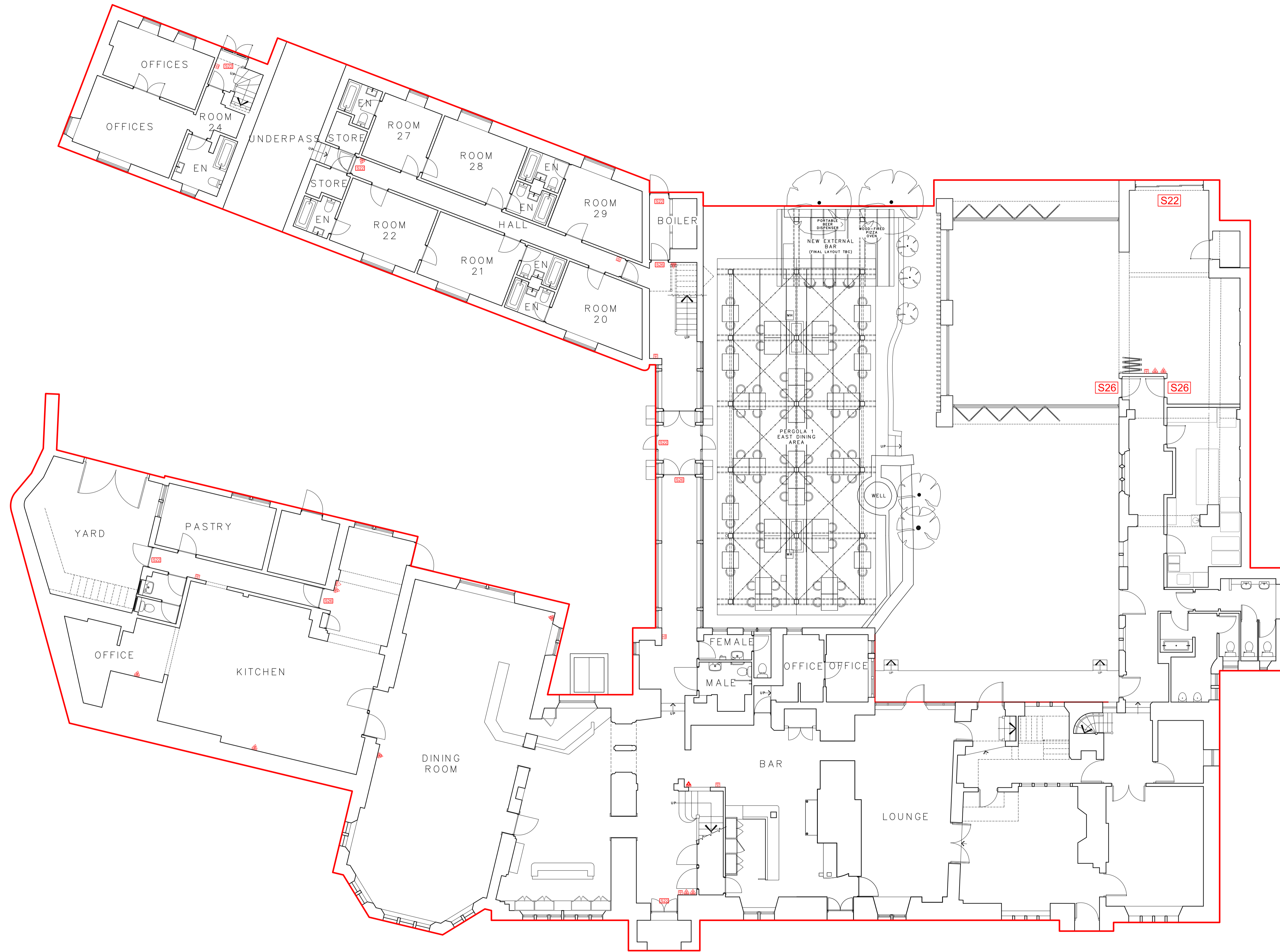
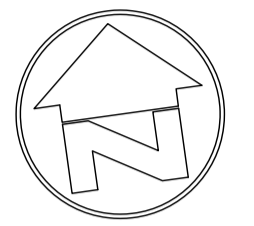




# THE OLD BELL HOTEL, ABBEY ROW, MALMESBURY, SN16 0BW

This drawing is copyright of CLARK & MASLIN Ltd and may not be copied or reproduced without permission.  
 Figured dimensions are to be taken in preference to scaled dimensions.  
 Large scale drawings to have preference to small scale drawings.  
 Dimensions for fixed-in items are to be checked on site prior to manufacture.

REV	DETAIL OF REVISION	BY	DATE
A	RED LINE INDICATING OUTER BOUNDARY ADDED	HH	22/07/21
B	RED LINE ADDED FOR FUNCTION ROOM	EM	13/04/23
C	FIRE SAFETY EQUIPMENT ADDED TO EXTENSION	DN	19/04/23
D	RED LINE AMENDED	DN	21/04/23

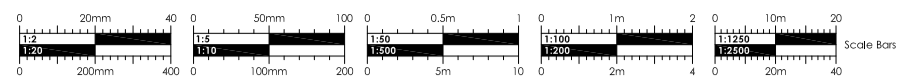


## GROUND FLOOR PLAN

- KEY:
- FIRE EXTINGUISHER WATER WALL MOUNTED
  - FIRE EXTINGUISHER FOAM WALL MOUNTED
  - FIRE ALARM DEVICE FIRE ALARM CALL POINT MANUAL
  - FIRE EXTINGUISHER CARBON DIOXIDE GAS WALL MOUNTED
  - FIRE EXTINGUISHER WET CHEMICAL WALL MOUNTED
  - FIRE EXTINGUISHER DRY POWDER WALL MOUNTED
  - FIRE EXTINGUISHER FIRE BLANKET WALL MOUNTED
  - FIRE EXTINGUISHER FIRE EXTINGUISHER WALL MOUNTED
  - FIRE EXTINGUISHER FIRE EXTINGUISHER WALL MOUNTED
  - FIRE SAFETY SIGN FIRE EXIT - DIRECTIONAL
  - FIRE SAFETY SIGN FIRE EXIT

**CLARK & MASLIN**  
 Unit 5, Charlton Business Park  
 Crudwell Road, Malmesbury  
 Wiltshire, SN16 9RU  
 Telephone: 01666 822911  
 www.clarkandmaslin.co.uk  
 Planning Architecture Conservation

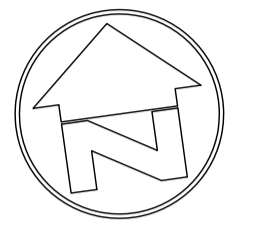
Client WHIT HANKS			
Project PROPOSED PREMISES LICENCE THE OLD BELL HOTEL, ABBEY ROW, MALMESBURY, SN16 0BW			
Description EXISTING GROUND FLOOR PLAN			
Scale 1:100	PG Size A1	Drawn HH	Date JUL '21
Drawing No 5111/60	Revision D		



# THE OLD BELL HOTEL, ABBEY ROW, MALMESBURY, SN16 0BW

This drawing is copyright of CLARK & MASLIN Ltd and may not be copied or reproduced without permission.  
 Figured dimensions are to be taken in preference to scaled dimensions.  
 Large scale drawings to have preference to small scale drawings.  
 Dimensions for fixed-in items are to be checked on site prior to manufacture.

REV	DETAIL OF REVISION	BY	DATE
A	RED LINE INDICATING OUTER BOUNDARY ADDED	HH	23/07/21



- FIRST FLOOR PLAN**
- KEY:**
- FIRE EXTINGUISHER WATER WALL MOUNTED
  - FIRE EXTINGUISHER FOAM WALL MOUNTED
  - FIRE ALARM DEVICE FIRE ALARM CALL POINT MANUAL
  - FIRE EXTINGUISHER CARBON DIOXIDE GAS WALL MOUNTED
  - FIRE EXTINGUISHER WET CHEMICAL WALL MOUNTED
  - FIRE EXTINGUISHER DRY POWDER WALL MOUNTED
  - FIRE EXTINGUISHER FIRE BLANKET WALL MOUNTED
  - FIRE SAFETY SIGN FIRE EXIT - DIRECTIONAL
  - FIRE SAFETY SIGN FIRE EXIT

**CLARK & MASLIN**  
 Unit 5, Charlton Business Park  
 Crudwell Road, Malmesbury  
 Wiltshire, SN16 9RU  
 Telephone: 01666 822911  
 www.clarkandmaslin.co.uk  
 Planning Architecture Conservation

---

Client  
**WHIT HANKS**

---

Project  
**PROPOSED PREMISES LICENCE  
 THE OLD BELL HOTEL, ABBEY ROW,  
 MALMESBURY, SN16 0BW**

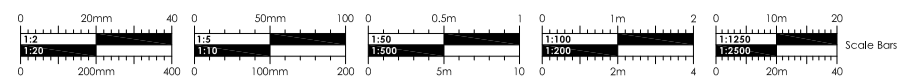
---

Description  
**EXISTING FIRST FLOOR PLAN**

---

Scale 1:100	PG Size A1	Drawn HH	Date JUL '21
Drawing No <b>5111/61</b>	Revision <b>A</b>		

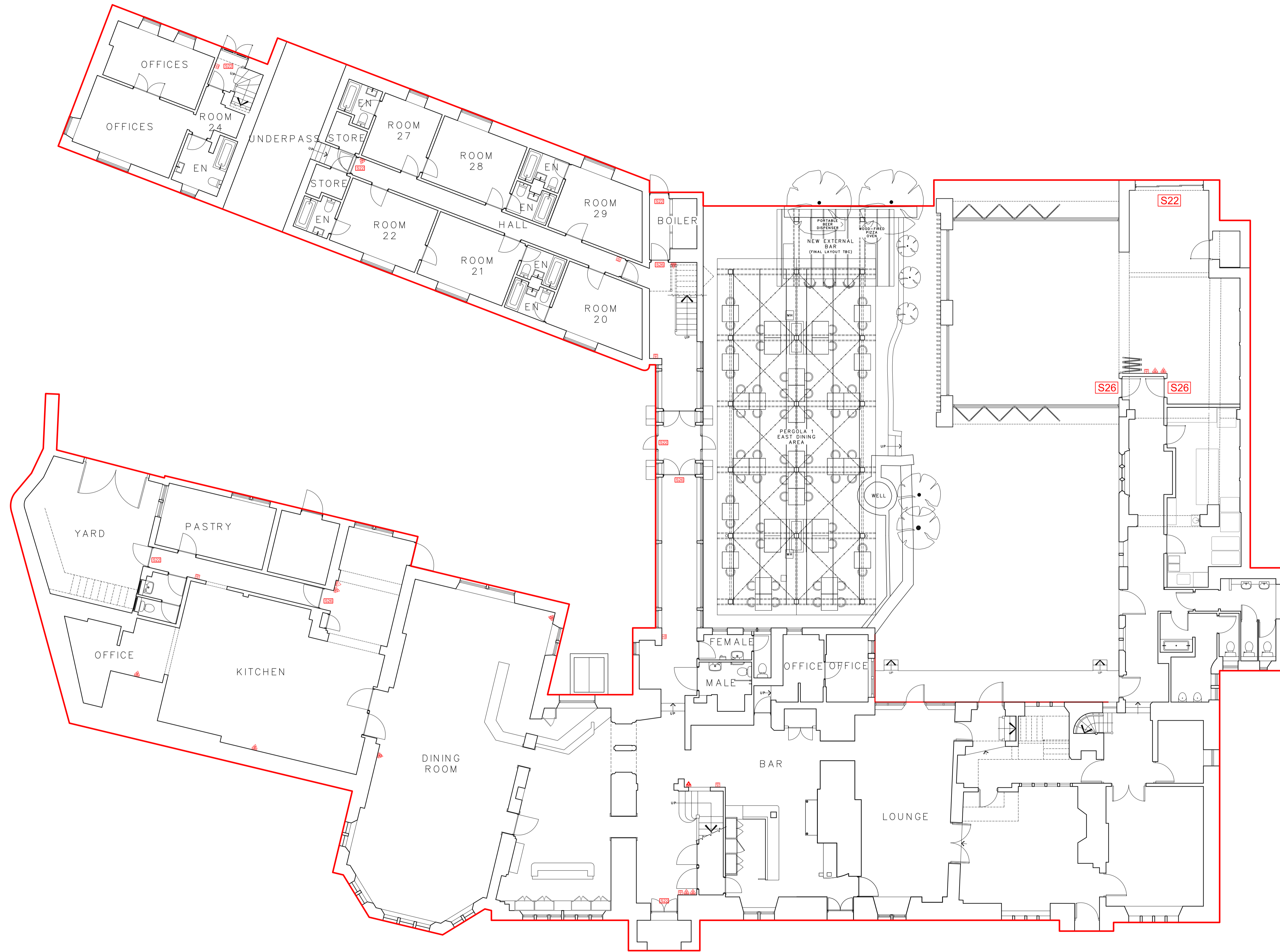
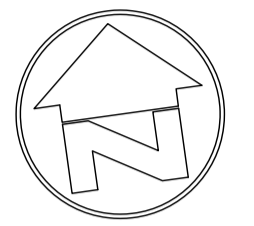




# THE OLD BELL HOTEL, ABBEY ROW, MALMESBURY, SN16 0BW

This drawing is copyright of CLARK & MASLIN Ltd and may not be copied or reproduced without permission.  
 Figured dimensions are to be taken in preference to scaled dimensions.  
 Large scale drawings to have preference to small scale drawings.  
 Dimensions for fixed-in items are to be checked on site prior to manufacture.

REV	DETAIL OF REVISION	BY	DATE
A	RED LINE INDICATING OUTER BOUNDARY ADDED	HH	22/07/21
B	RED LINE ADDED FOR FUNCTION ROOM	EM	13/04/23
C	FIRE SAFETY EQUIPMENT ADDED TO EXTENSION	DN	19/04/23
D	RED LINE AMENDED	DN	21/04/23



## GROUND FLOOR PLAN

- KEY:
- FIRE EXTINGUISHER WATER WALL MOUNTED
  - FIRE EXTINGUISHER FOAM WALL MOUNTED
  - FIRE ALARM DEVICE FIRE ALARM CALL POINT MANUAL
  - FIRE EXTINGUISHER CARBON DIOXIDE GAS WALL MOUNTED
  - FIRE EXTINGUISHER WET CHEMICAL WALL MOUNTED
  - FIRE EXTINGUISHER DRY POWDER WALL MOUNTED
  - FIRE EXTINGUISHER FIRE BLANKET WALL MOUNTED
  - FIRE EXTINGUISHER FIRE EXTINGUISHER WALL MOUNTED
  - FIRE EXTINGUISHER FIRE EXTINGUISHER WALL MOUNTED
  - FIRE EXTINGUISHER FIRE EXTINGUISHER WALL MOUNTED
  - FIRE EXTINGUISHER FIRE EXTINGUISHER WALL MOUNTED
  - FIRE EXTINGUISHER FIRE EXTINGUISHER WALL MOUNTED

**CLARK & MASLIN**  
 Unit 5, Charlton Business Park  
 Crudwell Road, Malmesbury  
 Wiltshire, SN16 9RU  
 Telephone: 01666 822911  
 www.clarkandmaslin.co.uk  
 Planning Architecture Conservation

Client  
**WHIT HANKS**

Project  
**PROPOSED PREMISES LICENCE  
 THE OLD BELL HOTEL, ABBEY ROW,  
 MALMESBURY, SN16 0BW**

Description  
**EXISTING GROUND FLOOR PLAN**

Scale 1:100	PG Size A1	Drawn HH	Date JUL '21
Drawing No 5111/60	Revision D		